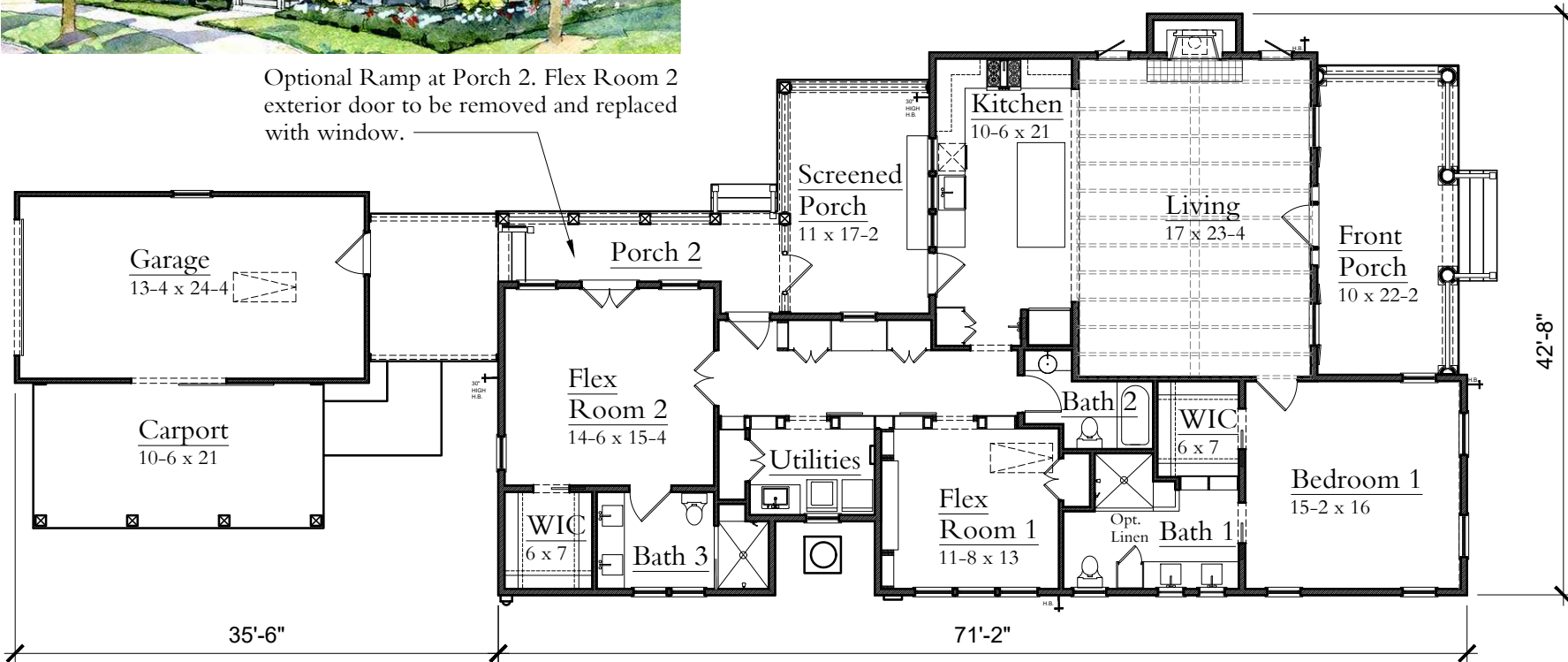


This house was designed as an adaptive home in conjunction with the Parkinson's Foundation. 5% of all proceeds from the sale of this plan go to the Parkinson's Foundation.



Front Elevation

Optional Ramp at Porch 2. Flex Room 2 exterior door to be removed and replaced with window.



First Floor

TNH-  
SC-63

Adaptive  
Cottage

TRADITIONAL  
NEIGHBORHOOD  
HOMES

Small  
Cottage  
Collection

PLAN INFO:

- 1st Flr: 1,966 Heated sqf
- 42'-8" W x 71'-2" D\*  
\*w/ garage 106'-8" D
- 3 Bedrooms
- 3 Bathrooms
- Owner's Suite: 1st Floor
- Ceiling Ht:  
1st Floor: 10'  
Living: 11'  
Bedrm 1: 11'
- Foundation(s): Slab

MDG

MOSER DESIGN GROUP  
Residential Design  
Urban Planning